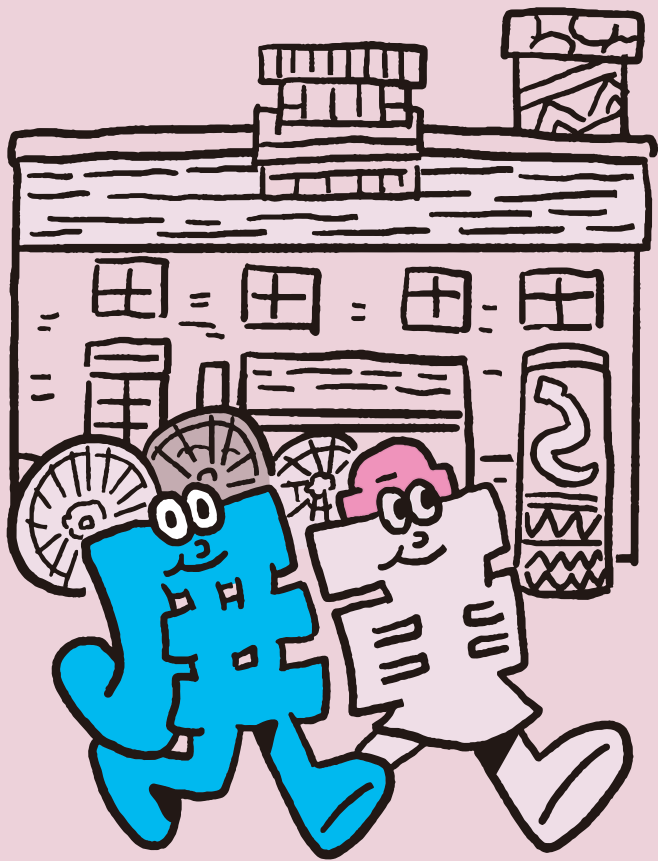


# Pingtung

TRAVEL GUIDE 2022



屏東旅行

## Cultural Treasure Chest

Go on an adventure through Pingtung's cultural history

Vol

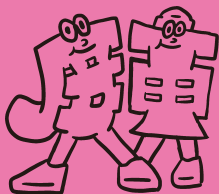
5

## Five themed tours 36 routes Diverse selection of Pingtung attractions



Visit Pingtung, where you can stroll through towns, sampling local snacks and experiencing flavors old and new; move your body and sweat to the rhythms of the ocean and mountains; or join in on the fun of city festivals and temple ceremonies, immersing yourself in the local culture. Explore Taiwan's southern reaches on a solo journey or come on an adventure with your family and friends—the choice is yours.

Pingtung is here for all those people looking for something a little more from their travels. There are five themed tours carefully curated for you to experience the charm of Pingtung's culture, food, and nature: "Village Tour", "Who Let the Kids Out?", "Sea to Sky Adventure", "Festival Fun", and "Cultural Treasure Chest". Freely pick and choose the sites and experiences you want from each itinerary to create a customized Pingtung adventure.



## Pingtung

TRAVEL  
GUIDE  
Vol.

# 5

## Cultural Treasure Chest

Go on an adventure through  
Pingtung's cultural history

From the mountains to the plains, come see how diverse the cultural landscape of Pingtung is! High up around Dawu Mountain you'll find Indigenous tribes living in the townships of Sandimen, Wutai, and Majia, while down in the plains live the Luidui Hakka people in Zhutian and Neipu Townships. In Pingtung, you can explore the cultures along the mountain forests, or become a cultural archaeologist and peer back into the events of the past—however you want to uncover Pingtung's deep cultural roots, it's up to you!

# CONTENTS

PINGTUNG TRAVEL GUIDE Vol.05

Majia, Sandimen, Wutai, Taiwu, Wanluan, Laiyi, Chunri, Shihzih, Checheng, Mudan, Manzhou, Zhutian, Neipu, Gaoshu, and Changzhi Townships

ROUTE  
01



Majia and Sandimen Townships 04  
Visit the Rinari Tribe

ROUTE  
02



Sandimen Township 06  
Stunning Sandimen Art

ROUTE  
03



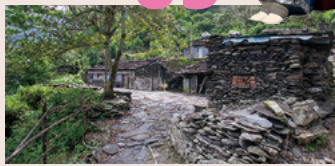
Wutai Township 08  
Beat the Heat in Wutai

ROUTE  
04



Taiwu, Wanluan, and Laiyi Townships 10  
In the Shadow of Dawu Mountain

ROUTE  
05



Chunri and Shihzih Townships 12  
Hidden Secrets of the Past

ROUTE  
06



Checheng, Mudan, Manzhou Townships 14  
History Lives on in the Present

ROUTE  
08



Neipu Township 18  
See the Sights of Neipu's Hakka Village

ROUTE  
09



Gaoshu Township 20  
Be Our Guest in Gaoshu

ROUTE  
07



Zhutian Township 16  
Stroll Through Zhutian's Hakka Village

ROUTE  
10



Changzhi, Wanluan, Neipu, and Zhutian Townships 22  
Explore the Delights of Hakka Cuisine

# Visit the Rinari Tribe

#IndigenousTribalArts #Paiwan #Rukai

The Paiwan and Rukai peoples live in the area known as Rinari. Within this region are the Taiwan Indigenous Peoples Culture Park and the Shanchuan Glass Suspension Bridge, which helps connect the area to the villages deep in the mountains. The Indigenous tribes are now a tourist hotspot, and Rinari has the most arts workshops of anywhere in Taiwan. All this creativity has seeped into the culture of the area, transforming this mountainous area into a unique artist village.



## 1 \ Immersive cultural experience /

### Taiwan Indigenous Peoples Culture Park

● No. 104, Fengjing Ln., Beiye Vil., Majia Township, Pingtung County  
● 08-799-1219 ● 8:30am – 5:00pm, closed Mondays

The Taiwan Indigenous Peoples Culture Park is set among the Ailiao River and Dawu Mountain, bringing together the local culture with activities like hiking and immersing visitors in the lifestyle of the local peoples. The park features an art gallery that showcases the vitality of a new generation of Indigenous peoples, with Indigenous artists-in-residence and handicraft workshops providing visitors with a deeper cultural experience.

4



## 2 \ River valley art /

### Shanchuan Glass Suspension Bridge

● No. 56, Sec. 1, Zhongzheng Rd., Sandimen Township, Pingtung County ● 9:00am – 5:00pm, closed Mondays

The Shanchuan Glass Suspension Bridge gets its name from the traditional Paiwanese artform of making glass beads. Spanning the river below, its sparkling glassy white surface connects the townships of Majia and Sandimen. Its 262-meter-long expanse is decorated with totems of the hundred-pace snake and the whole structure lights up at night, creating unique nighttime and daytime scenery. The entire piece is a testament to the incredible local Indigenous culture.

## 3 \ Taiwan's own Province /

### Rinari Tribe

● No. 63, Sec. 1, Heping Rd., Majia Vil., Majia Township, Pingtung County  
● Hours of Operation: 24/7

This area suffered terrible damage during Typhoon Morakot in 2009, forcing the Indigenous peoples in the mountains to relocate to the Majia Farm permanent housing community, and joining together the Paridrayan, Majia, and Kucapungane Tribes to create the Rinari Tribe. The area has many artist workshops showcasing the unique styles of Indigenous art. You can also sample the local cuisine, which is a unique blend of many different cultures.

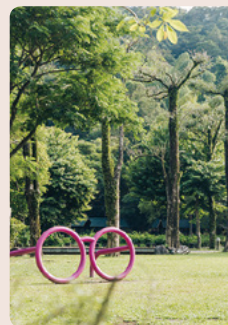


## 4 \ Escape the summer heat with a trip / to the mountain forests

### Liangshan Recreational Area

● No. 14-20, Liangshan, Liangshan Vil., Majia Township, Pingtung County  
● 08-799-3520 ● 8:00am – 5:00pm

Liangshan Recreational Area has many mountain trails to choose from. If you follow the path along Oxbow Creek, upstream from the Donggang River, you'll come across the three-tiered sight of Liangshan Waterfall where you can enjoy the refreshing cool waters of the natural spring. From the observation deck of the Saijia Recreation Area, you can watch the brave souls paragliding above, or you can venture into the woods to spend a peaceful night camping in the calming embrace of nature.



5



# Stunning Sandimen Art

#PaiwanLife #TraditionalCulture #GetCreative

Take a deep dive into Paiwan culture and see why the special energy in the ancient township of Sandimen has given birth to so many artists. In the traditional setting of stone-slab houses and fields of millet, all built together by the residents of the tribe, there is strong evidence of a dialogue between their surroundings and their art. It's an expression of the unique values of the Indigenous peoples.

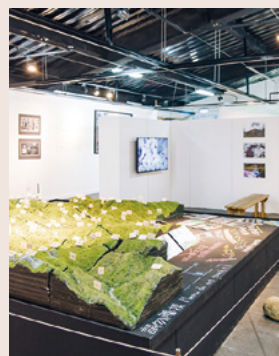
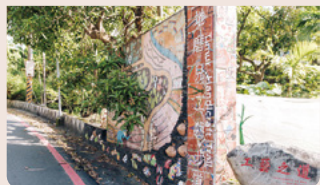
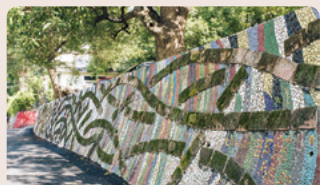


## 5 \ The vitality of Indigenous art /

### Sandimen Craft Village

- Sec. 1, Zhongzheng Rd., Sandimen Township, Pingtung County
- Hours of Operation: 24/7

The Indigenous peoples in Sandimen use their art to greet their guests. Walking along the Sandimen Craft Trail, built together by the people of Sandimen, you'll tread on beautiful clay tiles that lead from one gallery or museum to the next, showing off the incredible diversity of the tribe's creativity. The vitality of the artists' work shines through their creations.



## 6 \ The hundred-pace snake design / slithers along the stone slabs

### Sandimen Indigenous Museum

- No. 110, Sec. 2, Zhongzheng Rd., Sandimen Township, Pingtung County
- 08-799-4084 ● 9:00am - 12:00pm, 1:30pm - 4:30pm, closed Sundays and Mondays (Guided tours by appointment)

Zhongshan Park, which in the past housed the Sandimen Shrine, only became a park after the war, and in 2003 the Sandimen Indigenous Museum was built. The structure was made using local traditional stone slabs. A local Indigenous artist took great care to carve the stones with the markings of the hundred-pace snake, imbuing the museum with the myths of the past and helping to bring back some of the area's lost culture.



## 7 \ Paiwan sacred ritual site /

### Timur Art Park

- Zhongzheng Rd., Sandimen Township, Pingtung County, located about 200m up from the Sandimen Township Office
- Hours of Operation: 24/7

Timur Art Park is located on the sacred ritual site of the Paiwan people. Right in the center is the "Stage of Life". On opposite ends are placed two large sculptures—the stone cooking vessel, which is a symbol of the female, and the "column of the ancestral souls", which symbolizes the male. The structure is a physical representation of the Paiwan people's spiritual world. Blending the traditional and the modern, the park displays many pieces of art crafted by Paiwan artists, using culture to open a window onto the Indigenous community.



## 8 \ Take a trip into the world of indigenous coffee growing /

### Dewen Tribe

- Dewen Tribe, Sandimen Township, Pingtung County
- 0915-876-625 ● Eco-tours by appointment

The Dewen Tribe was once considered as the capital of Sandimen Township. During the Japanese colonial period it had a school and even an agricultural test site. Despite being situated in beautiful natural scenery, the most charming aspect of the village are its cultural sites, such as the stone-slab houses, hunting school, and fields of millet. Young Indigenous people are now returning to the old settlement and setting up eco-tours and working in the coffee industry, which make this the perfect rural getaway.



# Beat the Heat in Wutai

#RukaiCultureMuseum #ChurchOfTheSacredHeartOfJesus  
#BeautifulWutai

Located at the southern tip of Taiwan's Central Mountain Range, Wutai Township is the home of the Rukai people. As you walk through the settlement starting at Yanban Alley (Tathigarane), you'll encounter a clay pot-lined wall, relief carvings, and carved stone slabs in addition to the Rukai Culture Museum and the Wutai Church of the Sacred Heart of Jesus. From the buildings down to the very streets, all of Wutai is a work of art showing off the aesthetics of the local Indigenous peoples.



9 \ See the beauty of /  
Rukai culture

## The Rukai Culture Museum

● No. 59, Zhongshan Ln., Wutai Township, Pingtung County  
● 08-790-2297 ● 8:30am – 12:30pm, 1:00pm – 4:30pm, closed Mondays and Tuesdays

The Rukai Culture Museum was built using modern methods and traditional stone slabs. The design of the outer walls was inspired by traditional Rukai dance, giving physical form to the local culture. The layout of the interior follows the design of the stone-slab houses, showcasing traditional Rukai clothing and objects used in daily life. The precise and intricate details of the artwork lay bare the spiritual beliefs of the Rukai people.



10 \ Surround yourself in the stories of /  
the Rukai people

## Yanban Alley (Tathigarane)

● Wutai Village, Wutai Township, Pingtung County  
● Hours of Operation: 24/7

When you arrive at Yanban Alley (Tathigarane), you'll be guided along the stone slab path by clay pots atop a wall and relief carvings of objects important to the local culture like lilies, hundred-pace snakes, and clouded leopards. You are led into the streets of the tribe where you will see interesting examples of local architecture. On the outside of these buildings are carvings of the stories of weaving, hunting, and chieftains, guiding you deeper into Rukai culture.

11 \ Shenshan—the jewel of Wutai Township /

## Shenshan Waterfall

● 39km marker, Prov. Highway 24, Wutai Township, Pingtung County ● To book a guide, call: 08-790-2234  
● Hours of Operation: 24/7

The Ailiao North River and its tributary, which flows down as the Shenshan Waterfall, form a vista of river valleys, deep pools, and cascading waterfalls—the jewel of Wutai Township. Starting out along the path from Shenshan Village, you'll encounter three observation decks at different elevations, each with its own unique perspective on the scene below. When you reach the waterfall, you will be awed by the power of the white water as it washes down like a silk curtain and crashes onto the rocks below with a thunderous sound.



12 \ A beautiful church with a /  
flourish of Rukai culture

## Wutai Church of the Sacred Heart of Jesus

● No. 61-3, Shenshan Ln., Wutai Vil., Wutai Township, Pingtung County ● 8:00am – 5:00pm

Built in 1959, the Wutai Church of the Sacred Heart of Jesus incorporates much of the local Rukai culture. The exterior is made with local stone slabs, while the church pews inside were carved by local Rukai artists. The faces on the pews are turned in the direction of the rising sun to symbolize hope, and the statue of the Virgin Mary is wearing the traditional clothing of the Rukai people. The whole scene is a fusion of Western religion and Indigenous culture.





# In the Shadow of Dawu Mountain

#DawuMountain #CulturalExperience

Laiyi Township is full of surprises. Hidden under the Linbian riverbed is a great feat of hydraulic engineering. Living at an elevation over 1,000 meters, the local Indigenous peoples to this day observe a mysterious ritual that happens only once every five years, while over in Taiwu Township you'll find a church with world-class characteristics. Pingtung may not have any official world heritage sites, but come see for yourself the world-class quality of what's on offer.

Source: Jiluofugan Cultural and Educational Association



## 13 \ The Maljeveq of the Paiwan Kujaljai Tribe /

### Kujaljai Tribe

● The Kujaljai Tribe is located on Zhongzheng Rd. in Pingtung County's Laiyi Township.

\*The Maljeveq is a ritual that is not open to tourists. Please respect the culture and receive permission from the locals before participating. While attending, respect the rules of the ritual.

The Kujaljai Tribe is one of the few that still practice the Maljeveq, a tradition held once every five years. For the Paiwan people, the ritual strengthens their bonds with their ancestor's souls and for a time allows them to be together again. The ritual is the most important and representative part of Paiwan culture, and it is something that anyone with a serious interest in Indigenous culture cannot miss out on.



Source: Jiluofugan Culture and Education Association

## 14 \ One of the world's most unique churches /

### Jiaping Church of Our Lady of Fatima

● No. 3, Jiaping Ln., Taiwu Township, Pingtung County  
● 9:00am – 5:00pm, closed weekends

The Church of Our Lady of Fatima has a stately beauty that stems from its blend of Indigenous aesthetics with Western religion. It is a must-see sacred site. The roof of the church is shaped like the peak of Dawu Mountain, while on both sides it is protected by two columns of the ancestral souls of chieftains. On the inside you'll find the floor covered in Paiwan patterns, glass bead hanging lights, and pews carved with the faces of Indigenous people.



## 15 \ Pingtung Coffee /

### Pingtung Coffee Park

● No. 5, Dawushan 1st St., Wanluan Township, Pingtung County ● 9:00am – 6:00pm

Pingtung Coffee Park was created to help promote the local coffee brand P-Coffee, short for "Pingtung Coffee". The main building is made from colorful shipping containers and the park showcases the special flavor of Pingtung coffee with its selection of organic beans from Wutai and Chunri Townships. It's the perfect place for coffee lovers to mix and mingle while getting a taste of the local culture from one of the dishes of Indigenous cuisine on offer.



## 16 \ Japanese colonial engineering that is now a tourist hotspot /

### The Underground Dike, Erfeng Canal

● No. 3, Guyi Rd., Laiyi Township, Pingtung County  
● Hours of Operation: 24/7

The Erfeng Canal was designed by hydraulic engineer Torii Nobuhei during the Japanese colonial period. He was sent by the Taiwan Sugar Co., then known by its Japanese name "Taito", to develop the land for sugar cane plantations by solving the issues the area had with irrigation. So, Torii Nobuhei created an underground water reservoir below the Linbian riverbed, ensuring a steady supply of water downstream during the dry season. Today, the Erfeng Canal is listed as a cultural tourist attraction and is one of the best places to learn about the local environment.





# Hidden Secrets of the Past

#SecludedForest #FenggangRiver #IndigenousHeritageSite

Standing atop Lilong Shan, you can see the whole Hengchun Peninsula below like an unfurled painting, yet hidden deep in the green foliage is a spectacular Indigenous heritage site. Upstream along the Fenggang River you'll find the dome-shaped thatched houses of the Southern Paiwan people, looking much like the shells of turtles, and the stone-slab houses of the Paiwan people on Shikejian Shan. Deeper in the woods you'll encounter much of Pingtung that you've never seen before. So, what are you waiting for? Get your backpack and go exploring!



17

\ The most complete Paiwan / stone-slab settlement /

## Tjuvecekan Tribe

- Tjuvecekan Tribe, Chunri Township, Pingtung County ● 0910-470-402
- 9:00am – 3:00pm (Eco-tours by appointment)

Tjuvecekan Tribe is the most complete Paiwan stone-slab settlement remaining to this day. The roughly 30 stone-slab houses in the village have been preserved in their original condition without any electricity. In recent years, the residents have rebuilt their homes to include eco-tours providing cultural experiences, education on the natural environment, and tours of the settlement. With all this, there's no better way to experience the traditional Indigenous lifestyle than a visit to Tjuvecekan.



12



18

\ The beautiful Shuangliu Waterfall /

## Shuangliu Forest Recreation Area

- No. 23, Danlu 2nd Ln., Danlu Vil., Shihzh Township, Pingtung County
- 08-870-1393 ● 8:00am – 5:00pm



This area was once inhabited by the Paiwan people, and it still retains many cultural sites as well as natural attractions. Walking through the reforested area thick with broad-leaved ash and Formosa acacia trees, you'll come across the heritage site of the dome-shaped "turtle shell" thatched houses of the Southern Paiwan people. Along the way you'll see the Hengchun Peninsula's iconic plants, birds, and butterflies. Following the trail upstream you'll find Shuangliu Waterfall, voted the second most beautiful waterfall in Taiwan.

19

\ See all Hengchun from the top of one of Taiwan's 100 / tallest mountains /

## Lilongshan Trail

- No. 200, Fenglin 2nd Ln., Longshan Rd., Fenglin Vil., Shihzh Township, Pingtung County, next to Lilongshan Memorial Museum.
- A mountain permit is required for entry.
- 08-788-2647 (Pingtung Forest District Office)

The Lilongshan Trail is quite a challenge, but along the way you'll be rewarded with equally majestic views. As you make your way through the tropical forest, you'll see the sky blocked out by the lush foliage, twisted vines, and explosions of verdant ferns. When you arrive at Kuling River, marvel at the wondrous carvings made by the water as it passes over and through the sandstone. And when you reach the triangulation survey point at the peak of the mountain, you can look down at the whole of the Hengchun Peninsula stretched out below, as well as out over the Taiwan Strait as far as Liuqiu Island.



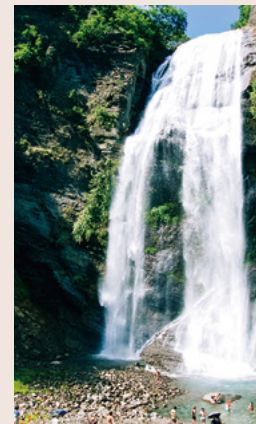
20

\ The hidden rainbow of Shihzh Township /

## Kayoufeng Waterfall

- No. 17, Sec. 4, Zhongshan Road, Shihzh Township, Pingtung County ● Hours of Operation: 24/7

Kayoufeng Waterfall is called "zhao li diu" in the Paiwan language which means "precipice." The waterfall stands 40-meters tall, and when the water levels are high it spreads out in a great fan as it falls over the cliff. The mist that springs up from the churning waters below often creates a vibrant rainbow. It's a fantastic sight that is easily approachable and it's the most majestic and popular waterfall south of Fangliao Township.



13



# History Lives on in the Present

#VentureBackIntoHistory #MudanIncident

Take an archaeological journey through Pingtung with the Mudan Incident as your inspiration. See Jiupeng Community for yourself, where sailors from the Ryukyu Islands were forced to come ashore after a shipwreck. Visit the Shimen Historic Battlefield, where Taiwan's Indigenous peoples fought back the Japanese, and Wild Peony Shrine Park, where people honor the memory of those lost in battle. Peer into the mountains and ocean of Pingtung and you'll peer straight into history as if traveling back in time.



## 21 \ The white torii on the mountaintop /

### Gaoshi Wild Peony Shrine Park

- No. 29, Gaoshifo, Mudan Township, Pingtung County
- Hours of Operation: 24/7

Gaoshi Shrine, famous for having a white torii perched atop a mountain, played a large role in the Mudan Incident during the period when Taiwan was under Qing Dynasty rule (1683 – 1895). After Taiwan became ruled by colonial Japan (1895 – 1945), the shrine was built by the Gaoshi Tribe under the influence of Japan's Kominka (Japanization) Movement. The shrine was abandoned until after the war, when all that was left was a stone wall. Following a burst of fundraising and hard work, the pure white torii was finally erected to commemorate the important history of this area.



## 22 \ Revisit the past /

### Shimen Historic Battlefield

- Shimen Historic Battlefield, Checheng Township, Pingtung County
- Hours of Operation: 24/7



Because of its militarily strategic location, Shimen (stone door) is the name given to the narrow strip of Sichongxi that passes between two mountains. It was here that the Indigenous peoples of the Mudan and Gaoshi Tribes fought back the Japanese in what is known as the "Mudan Incident." Following along through the natural stronghold of Shimen you come across the stunning vista of the Mudan Reservoir. Walking this path is like looking back into the history of Hengchun and Taiwan.



## 23 \ Majestic sand dunes by the ocean /

### Jiupeng Community

- No. 1, Shuizhu Rd., Manzhou Township, Pingtung County
- 0906-939-828 (Jiupeng Community Development Council)

The coastal region of Jiupeng, also known as Bayao Bay, has the largest seaside sand dunes in all of Taiwan. This is the place where the Mudan Incident began—where sailors from the Ryukyu Islands were forced to come ashore after a shipwreck. Come to Jiupeng and revisit the past. Stand atop the Bitou Grassland and look out over the boundless verdant hills below, stretching out to meet the turquoise sea and the cobalt sky. The majesty of the view is sure to dispel all worries from your mind.



## 24 \ Experience the beauty of Manzhou through folksong /

### Manzhou Folksongs Museum

- No. 152, Zhongshan Rd., Manzhou Township, Pingtung County
- 8:00am – 5:00pm, closed Mondays

To give a complete picture of the beauty of Manzhou folk music, the Manzhou Folksongs Museum curated the stories of 23 masters of Manzhou folk songs and recorded over 100 songs, ensuring people would once again get to know this special art. From the museum it's just a short walk to the Gangkou Suspension Bridge where you can see the "One Tree Forest" of White Banyan Park, which is one banyan tree with so many branches and trunks as to look like it's a forest. Get lost in the magical beauty of nature that was also one of the shooting locations for the film "Life of Pi".



# Stroll Through Zhutian's Hakka Village

#OldWoodenTrainStation #Café #Library

Located in Liudui (lit. "six heaps"), Zhutian used to be known as Zhongdai (lit. "middle heap"), and, over the years, the community has developed a wonderful pace to its lifestyle. As you step out of the old, wooden train station you'll be greeted with the charming sight of a library, an art gallery, and a café, as well as a temple to the local deity, the Jingzi Pavilion, the old train station, and classic western style buildings. The neat rows of the old buildings harken back to the classic Hakka style of living.



25

\ Classic Japanese-style wooden train station with a makeover /

## Zhutian Station Cultural Park

- No. 23, Fengming Rd., Zhutian Township, Pingtung County
- 9:00am – 5:00pm, closed Mondays

Zhutian Station Cultural Park includes the old Zhutian Train Station and a group of classic old buildings nearby. What used to be the staging post to replace tired horses for fresh animals is now the Dr. Ikegami Ichiro Memorial Library, while the old warehouse is now the Mr. Li Hsiu-yun Photo Memorial Museum and Zhutian Cultural Center, and the Dexing Rice Mill has been reinvented as the Yamato Café. With an innovative modern twist, the old station is showing its dedication to keeping pace with the times.



26

\ The spiritual center of Liudui's Hakka people /

## Liudui Zhongyi Temple

- No. 99, Longmen Rd., Zhutian Township, Pingtung County
- Hours of Operation: 24/7



The Liudui Zhongyi Temple used to be known as the Xishi Zhongyi Pavilion, and it is here where the memories of what happened in Liudui Hakka Village during the Qing Dynasty are kept, such as the Zhu Yigui Uprising and the Lin Shuang-wen Rebellion. The temple honors the memories of all the brave souls lost in the fighting. For the Hakka people of Liudui, the Zhongyi Temple is more than a simple ritual hall—it is the sacred site where the troops were rallied before going out to battle.



27

\ Old trading center for crops and grains /

## Tiaodi Village Jingzi Pavilion

- Tiaodi Vil. Jingzi Pavilion, Zhutian Township, Pingtung County
- Hours of Operation: 24/7

The name of Zhutian's Tiaodi Village is closely connected with its history. "Tiao" means to sell rice, while "di" means to buy rice. This is because the settlement was a crucial trading center for rice and other grains along the Longjing River route. Along the levee of Nan'an is the red bricked Jingzi Pavilion, which is a building people would use to ritually burn any paper that had writing on it. The practice was a sign of utmost respect for the written language by the traditionally hardworking and studious Hakka people.



28

\ See the colorful murals of the Hakka village /

## Zhutian Old Street

- Meilun and Erlun Villages, Zhutian Township, Pingtung County
- Hours of Operation: 24/7

As you amble along the old streets of Zhutian's Hakka village, you'll come across murals of the classic manga Old Master Q at the Meilun Old Street intersection, while at Erlun Village Old Street are 3D artworks depicting scenes from local agricultural life, such as harvesting, sun-drying, and even a temple fair. Coupled with the old village landmarks of the classic western buildings, the local Tudigong Temple, the Jingsheng Pavilion, and the Kangle Stage, the scene is one of the past coming to life before your eyes.





# See the Sights of Neipu's Hakka Village

#HakkaCultureOfLiudui #NeipuCacao

For those who want to explore the culture of the Hakka people, Liudui is the place to be. After the Zhu Yi-gui Uprising in the Qing Dynasty, Pingtung's early Hakka settlers formed the "six camps self-defense force" in the Gaoping River Basin, which later became known as Liudui (six settlements). Neipu, known colloquially as "Houdui", is the largest of the settlements and along with the Hakka Cultural Park is an important place for understanding Hakka culture.



29

\ Experience the diversity of Hakka life /

## Liudui Hakka Cultural Park

- No. 588, Xinyi Rd., Neipu Township, Pingtung County
- 08-723-0100
- Hours of Operation: 9:00am – 5:00pm, closed Tuesdays

This building wearing a cloak of green plants was designed by architect Hsieh Ying-chun and preserves the style of the Hakka villages found within the 12 administrative districts of the Gaoping area. Showcasing different aspects of Hakka life, such as their shared family homes, religious beliefs, and crafts, it also has classes on the local environment to help visitors experience the rich philosophy of the Hakka way of life.



30

\ Liudui's oldest Mazu Temple /

## Neipu Mazu Temple

- No. 164, Guangji Rd., Neipu Township, Pingtung County

The Neipu Mazu Temple is the oldest temple in Liudui dedicated to the sea goddess. It is especially revered in local folk beliefs and is also known as Tianhou (Empress of Heaven) Temple. The temple is closely linked with the development of the region and has retained an important historical tablet in its compound. The tablet outlines a new law prohibiting the use of an area known as Gu Ling Bu that was the source of conflict between the region's different ethnicities. The beautiful artwork adorning the structure of the temple itself is also well worth taking the time to appreciate.



31

\ Taiwan's only temple honoring Han Yu /

## Changli Temple

- No. 111, Guangji Rd., Neipu Township, Pingtung County

One of the most iconic pieces of Hakka culture in Liudui's Neipu area is Changli Temple. It is also the only temple in all Taiwan that honors Han Yu. When settlers were coming to Taiwan during the Qing Dynasty, the early Hakka migrants brought their religion with them from their ancestral home. Now, every year on the 9th day of the 9th Lunar Month, they hold the Han Yu Cultural Festival, the biggest and most important cultural event in Neipu.

32

\ Farm-to-table cocoa /

## Neipu's Cocoa Farms

- Wugawan Cocoa Farm, Cacao Farm Formosa, Choose Chius, Taiwan Choco Cocoa Farm, Cocoa Baby, Cocoa Yummy Chocolate Workshop, Quan-Ming Fruits Unusual Prod. Co-op. (See appendix for details)

The arrival in Taiwan of Western trends of farm-to-table cocoa inspired Neipu's farmers to transition their operations to leisure farms for tourists. In Neipu you can visit cocoa farms, book a tour of organic fields, see where cocoa is made, and learn about how it is produced. As chocolate is for eating, Taiwan's award-winning cocoa farms also offer DIY experiences and taste testing.



# Be Our Guest in Gaoshu

#GrapplingWithGhosts #ChungLihoFormerResidence  
#FarmExperience

The road leading up the mountain to Gaoshu is like a long welcoming mat for visitors with its wide views of tropical agricultural land unobstructed by tall buildings. Gaoshu has both wide, open fields and sophisticated culture. In Daluguan, you'll find the Chung Li-ho Former Residence, the arts and culture old noodle house, and Shuntian Temple. Such a small town so steeped in culture is well worth taking your time to enjoy.



33

\ 50 years of fire-smoked flavor /

## Daluguan Old Noodles House

● No. 1-1, Zhongzheng Rd., Gaoshu Township, Pingtung County ● 8:00am – 7:00pm, closed Wednesdays

The traditional Daluguan Old Noodles House not changed for over 50 years. Inside the painstakingly preserved red brick building, they still use traditional stools and tables to maintain an atmosphere of a classic old noodle house. Inside the restaurant, the owner also has a collection of artwork. The feeling is like that of a small arts and culture center, so that with your bowl of traditional noodles, you'll also experience the rich taste of Taiwan's culture.

34

\ The unique tradition of "grappling with ghosts" /

## Guangfu Village Shuntian Temple

● No. 30, Guangfu Rd., Guangfu Vil., Gaoshu Township, Pingtung County

Guangfu Village's Shuntian Temple still practices Daluguan's unique Ghost Festival tradition known as "grappling with ghosts." During Ghost Festival, when it's believed the gates of hell are open and ghosts wander freely, people set out offerings of food to appease the spirits, known as "Pu Tu". After the "Pu Tu" period is over, the Shuntian Temple gathers the offerings and places them in a central square where the public can grapple with each other for the best items. The event gets its name ("qiang ban") from the Hakka tradition of using rice noodle dishes ("ban") as offerings for the ghosts. The tradition is held to give thanks and pray for blessings and has been listed as a Pingtung County intangible cultural asset.



35

\ Visit the home of a local literary giant /

## Chung Li-ho Former Residence

● No. 110, Zhongzheng Rd., Gaoshu Township, Pingtung County ● 8:00am – 6:00pm

Taiwan's Chung Li-ho was a Hakka novelist born in Liudui with his old residence located in Gaoshu Township's Guangxing Village. Entering the courtyard, you'll be overwhelmed by the strong feeling of history permeating every corner of the structure that uses red bricks made directly from the local soil. See with your own eyes the scenes that featured in his novels.



36

\ Fun farm experiences /

## Gaoshu farms along County Highway 185

● Hong Qi Organic Farm, Shang Zhuang Leisure Farm, Ming Chuan Ecological Leisure Farm, Yang Shan Leisure Farm (See appendix for details)

County Highway 185 crosses through one of Gaoshu's most important agricultural areas and is home to many leisure farms. You can have a food and farming experience on a pineapple plantation, spend a soothing afternoon enjoying tea and herbal essential oils, or see what it's like to work on a farm with traditional Japanese-style buildings. There're all kinds of rural experiences waiting for you along County Highway 185!





# Explore the Delights of Hakka Cuisine

#HakkaSnacks #WanluanPorkKnuckles

The most delicious way to get to know a culture is through its food and drink. Follow your nose through one Hakka settlement after another, guided by the intoxicating aromas of Hakka cuisine. The beauty of the Hakka people's rural lifestyle is evident in their fragrant foods, be it their flat rice noodles, savory rice dumplings, Hakka stir-fry, or succulent pork knuckles.



37 \ The classic taste of Changzhi Township /

## Changzhi Township's Hakka Eateries

● Gu Cang Hao Ke Traditional Hakka Noodle House, Granny A-Ying's Noodle House, Lunziding Hakka Eatery (See appendix for details)

In Changzhi Township, you can feast on Hakka cuisine from morning to night. There are classic Hakka dishes like savory rice dumplings and old shops selling flat rice noodles and rice seasoned with lard. There are also popular Hakka eateries without a menu where the owner will customize a meal for each party based on the number of people dining, with each dish a classic Hakka recipe. The fragrant dishes will have you begging for more.



38 \ A local delicacy loved by all /

## Wanluan Pork Knuckles

● The Xiongs Braised Pork Knuckles, Wan Tai Pork Knuckles, Lin Family's Pork Knuckles, Hai Hon Pork Knuckles (See appendix for details)



When you arrive at Wanluan's famous pork knuckle street you'll find the scent of braised meat wafting out from the many old shops that line the road—this is the classic Hakka braised pork knuckle. After being briefly scalded with boiling water, Wanluan pork knuckles are flash frozen before being braised in Chinese herbs. This ensures the knuckles are both chewy and crispy, and they can be enjoyed both hot or cold.



39 \ All the world's delicacies can't compare / to a bowl of flat rice noodles

## Neipu's Flat Rice Noodles

● A-Zhao Jie Flat Rice Noodles, A-Ying Noodle House, Liang Jie Mei Rice Noodles House (See appendix for details)

The Hakka people have a saying: all the world's delicacies can't compare to a bowl of flat rice noodles. Those noodles are made by putting rice milk into a steamer basket, and cooking it into sheets about the size of a handkerchief. The sheets are then cut into noodles and added to soups of all kinds. When visiting Neipu's traditional Hakka village be sure to try the famous shops in the West Market and Neipu Public Market. Or come to the old street and try the food made in traditional wood-fired stoves. You'll have to stay up late to try them, as these dishes are only made during the wee hours of the morning.



40 \ Nothing hits the spot / like a meal from an old / noodle joint

## Zhutian's Hakka Eateries

● Bo Gong's Snack Stand, Zhutian Salty Rice Dumplings (See appendix for details)

The little eatery on the corner outside Zhutian Train Station has been in business for over 50 years. Their specialty dishes are savory rice dumplings that the owner makes by hand and their big pot meal with over 10 different types of ingredients. Another local establishment is the old noodle joint that has been operating alongside Tudigong Temple for years. Tuck into a simple bowl of dry noodles or sample some of the side dishes and enjoy the temple atmosphere as you eat.



**ROUTE 8 See the Sights of  
Neipu's Hakka Village**

**Wugawan Cocoa Farm**

Add: No. 108, Tong'an Rd., Neipu Township, Pingtung County  
Tel: 0912-014-568  
Hours of Operation: 11:00am – 5:30pm, closed Mondays

**Cacao Farm Formosa**

Add: No. 80, Ronghe Ln., Sec. 3, Datong Rd., Neipu Township, Pingtung County  
Tel: 08-770-9138  
Hours of Operation: 11:00am – 6:00pm, closed Wednesdays

**Choose Chiuis**

Add: No. 328, Fufeng Rd., Neipu Township, Pingtung County  
Tel: 08-778-5070  
Hours of Operation: 10:00am – 5:30pm, closed Mondays

**Taiwan Choco Cocoa Farm**

Add: No. 36-6, Ln. 158, Zhudong Rd., Dongshi Vil., Neipu Township, Pingtung County  
Tel: 0985-227-476  
Hours of Operation: 9:00am – 5:00pm

**Cocoa Baby**

Add: No. 70, Xiyin Ln., Neipu Township, Pingtung County  
Tel: 0921-186-247  
Hours of Operation: Saturdays 9:00am – 5:30pm, Sundays 9:00am – 5:00pm

**Cocoa Yummy Chocolate  
Workshop**

Add: No. 168-1, Zhudong Rd., Neipu Township, Pingtung County  
Tel: 0987-397-566  
Hours of Operation: 8:00am – 6:00pm

**Quan-Ming Fruits Unusual  
Prod. Co-op.**

Add: No. 122, Demei Rd., Neipu Township, Pingtung County  
Tel: 0989-687-780  
Hours of Operation: 8:30am – 5:30pm, closed weekends

**ROUTE 9 Be Our Guest in  
Gaoshu**

**Hong Qi Organic Farm**

Add: No. 330, Chanye Rd., Gaoshu Township, Pingtung County  
Tel: 08-796-7301  
Hours of Operation: 8:00am – 6:00pm

**Shang Zhuang Leisure Farm**

Add: No. 7, Fengyuan Rd., Gaoshu Township, Pingtung County  
Tel: 08-796-2543  
Hours of Operation: Tuesdays – Saturdays 11:00am – 2:00pm, 5:00pm – 8:00pm, Sundays 11:00am – 2:00pm, closed Mondays

**Ming Chuan Ecological Leisure  
Farm**

Add: No. 114-6, Jiayi Vil., Majia Township, Pingtung County  
Tel: 08-799-0220  
Hours of Operation: Wednesdays – Fridays 10:00am – 5:00pm, weekends 10:00am – 6:00pm, closed Mondays and Tuesdays

**Yang Shan Leisure Farm**

Add: No. 33, Wanxing Rd., 10th Neighborhood, Jiuliao Vil., Gaoshu Township, Pingtung County  
Tel: 08-791-6331  
Hours of Operation: Weekends by appointment

**ROUTE 10 Explore the Delights  
of Hakka Cuisine**

**Gu Cang Hao Ke Traditional  
Hakka Noodle House**

Add: No. 44, Changxing Rd., Changzhi Township, Pingtung County  
Hours of Operation: Tuesdays – Saturdays 11:00am – 2:00pm, 5:00pm – 8:00pm, Sundays 11:00am – 2:00pm, closed Mondays

**Granny A-Ying's Noodle House**

Add: No. 324, Changxing Rd., Changzhi Township, Pingtung County  
Tel: 08-737-9508  
Hours of Operation: 7:00am – 2:30pm, closed Mondays

**Lunziding Hakka Eatery**

Add: No. 549, Zhongxing Rd., Changzhi Township, Pingtung County  
Tel: 08-762-6612  
Hours of Operation: 11:00am – 2:00pm, 5:00pm – 8:00pm

**The Xiongs Braised Pork Knuckles**

Add: No. 156, Baozhong Rd., Wanluan Township, Pingtung County  
Tel: 08-781-2521  
Hours of Operation: 7:00am – 9:00pm

**Wan Tai Pork Knuckles**

Add: No. 32-1, Minhe Rd., Wanluan Township, Pingtung County  
Tel: 08-781-2558  
Hours of Operation: 8:00am – 6:00pm, closed Tuesdays

**Lin Family's Pork Knuckles**

Add: No. 1-4, Minhe Rd., Wanluan Township, Pingtung County  
Tel: 08-781-1785  
Hours of Operation: Mondays – Fridays 8:00am – 6:00pm, weekends 6:30am – 7:00pm

**Hai Hon Pork Knuckles**

Add: No. 132, Baozhong Rd., Wanluan Township, Pingtung County  
Tel: 08-781-1220  
Hours of Operation: 10:30am – 7:30pm

**A-Zhao Jie Flat Rice Noodles**

Add: No. 80, Yangji Rd., Neipu Vil., Neipu Township, Pingtung County  
Tel: 08-778-4286  
Hours of Operation: 6:00am – 9:00am, closed Mondays

**A-Ying Noodle House**

Add: No. 75-1, Dongyang St., Neipu Township, Pingtung County  
Tel: 08-779-9967  
Hours of Operation: 9:00am – 11:00pm, closed Tuesdays

**Liang Jie Mei Rice Noodles  
House**

Address: No. 147, Zhongxing Rd., Neipu Township, Pingtung County  
Telephone: 08-779-9413  
Hours of Operation: 6:00am – 6:00pm, closed Wednesdays

**Bo Gong's Snack Stand**

Add: No. 23, Zhongzheng Rd., Zhutian Township, Pingtung County  
Tel: 08-771-1587  
Hours of Operation: 6:00am – 3:30pm, closed Saturdays

**Zhutian Salty Rice  
Dumplings**

Add: No. 116-2, Zhongzheng Rd., Zhutian Township, Pingtung County  
Tel: 08-771-2676  
Hours of Operation: 5:30am – 1:30pm, closed Thursdays

**Pingtung Tour — Vol.5 Cultural Treasure Chest**

**Publisher** Pingtung County Government

**Address** No. 527, Ziyou Rd., Pingtung City

**Printing Unit** Pingtung County Government Transportation and Tourism Department

**Telephone** 08-732-0415

**Printed** 2022/01

\* Hours of operation may vary. Hours posted by the attractions or stores will be taken as official hours. Please call ahead before visiting.

Pingtung County  
Government Ads

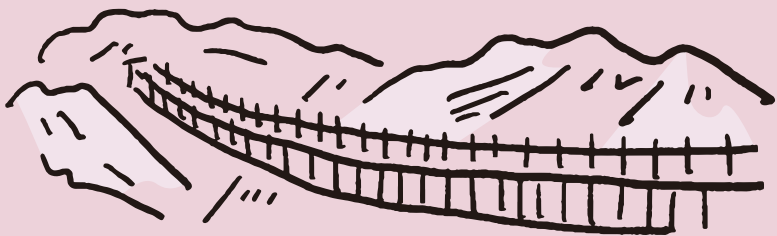


Pingtung Travel



Pingtung Go





PINGTUNG  
TRAVEL  
GUIDE 2022

Pingtung  
County  
Government

